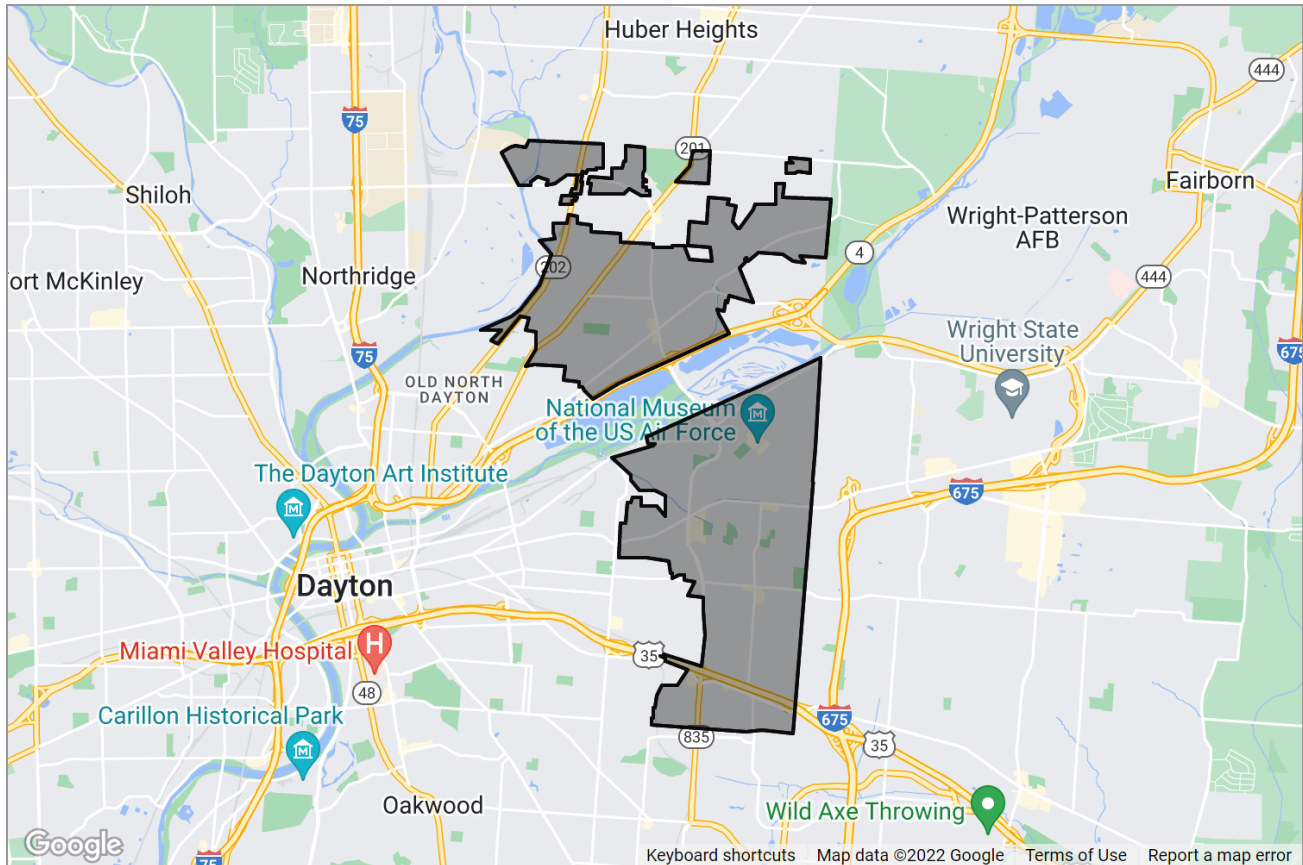


NEIGHBORHOOD REPORT

# Riverside, Ohio



Presented by

**Kyle Sasser** | REALTOR®

Ohio Real Estate License: SAL.2022004245



Mobile: (937) 907-6777

Main: [Kyle@AshlarRE.com](mailto:Kyle@AshlarRE.com)  
Agent: <https://AshlarRE.com/>

**Keller Williams Advisors Realty**

5250 Far Hills Ste 100  
Suite 100  
Dayton, OH 45429

# Neighborhood: Housing Stats and Charts

	Riverside	Montgomery County	Ohio	USA
<b>Median Estimated Home Value</b>	\$145K	\$190K	\$236K	\$347K
<b>Estimated Home Value 12-Month Change</b>	+11.5%	+11.6%	+12.7%	+16.6%
<b>Median List Price</b>	–	\$189K	\$220K	–
<b>List Price 1-Month Change</b>	–	+2.2%	+2.8%	–
<b>List Price 12-Month Change</b>	–	+18.9%	+18.9%	–
<b>Median Home Age</b>	67	61	55	42
<b>Own</b>	56%	61%	66%	64%
<b>Rent</b>	44%	39%	34%	36%
<b>\$ Value of All Buildings for which Permits Were Issued</b>	–	\$157M	\$6.42B	\$307B
<b>% Change in Permits for All Buildings</b>	–	+19%	+15%	+13%
<b>% Change in \$ Value for All Buildings</b>	–	+69%	+18%	+10%

## Price Range of Comps Sold

\$30K - \$40K 1

This chart shows the distribution of homes reported sold in the past three months within different price ranges in the area of your search. The amount shown for the subject property is sold data where available, or the property's estimated value when sales data is unavailable (such as a non-disclosure state) or provided in range format.

Data Source: Public records data

Update Frequency: Daily

■ Sales Count By Price Range

## Price per Square Foot of Comps Sold

\$50 - \$60 1

This chart shows the distribution of homes reported sold in the past three months at different prices per square foot.

Data Source: Public records data

Update Frequency: Daily

■ Sales Count By Price Per Sq Ft

## Size of Homes Sold

600 - 800 sq. ft. 1

This chart shows the distribution of homes reported sold in the past three months of different sizes in the area of your search.

Data Source: Public records data

Update Frequency: Daily

■ Sales Count By Living Area

## Age Range of Comps Sold

60 - 75

1

This chart shows the distribution of homes reported sold in the past three months of different age ranges in the area of your search.

Data Source: Public records data

Update Frequency: Daily

■ Sales Count by Age of House

## Number of Bedrooms in Homes Sold

2

1

This chart shows the distribution of homes reported sold in the past three months, compared by the number of bedrooms, in the area of your search.

Data Source: Public records data

Update Frequency: Daily

■ Sales Count by Bedroom

# Neighborhood: People Stats and Charts

	Riverside	Montgomery County	Ohio	USA
Population	25.1K	532K	11.7M	325M
Population Density per Sq Mi	2.58K	1.15K	285	—
Population Change since 2010	-2.2%	-0.4%	+2.6%	+8.2%
Median Age	36	39	39	38
Male / Female Ratio	50%	48%	49%	49%

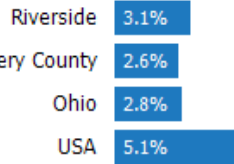
### Education Levels of Population

This chart shows the educational achievement levels of adults in an area, compared with other geographies.

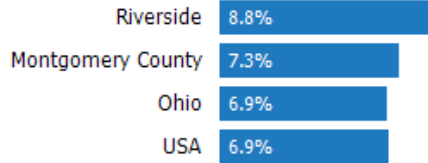
Data Source: U.S. Census American Community Survey via Esri, 2021

Update Frequency: Annually

#### Less Than 9th Grade



#### 9-12th Grade/No Diploma



#### High School Graduate



#### Associate Degree



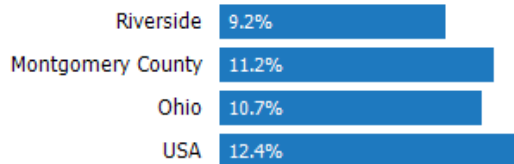
#### Bachelor's Degree



#### At Least a College Education



#### Grad/Professional Degree



### Population of Children by Age Group

This chart shows the distribution of the population of children by age range — from birth to 17 — in the area of your search.

Data Source: U.S. Census

Update Frequency: Annually

Riverside



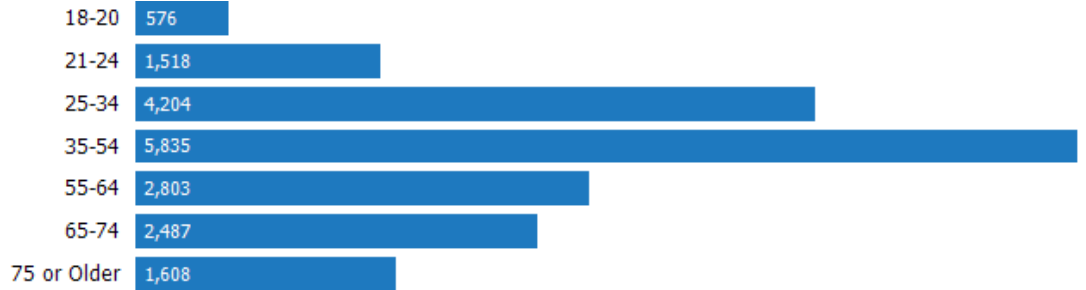
### Population of Adults by Age Group

This chart shows the distribution of the population of adults by age range — from 18 to 75-plus — in the area of your search.

Data Source: U.S. Census

Update Frequency: Annually

Riverside



### Households With Children

This chart shows the distribution of households with children, categorized by marital status, in the area of your search.

Data Source: U.S. Census

Update Frequency: Annually

Riverside



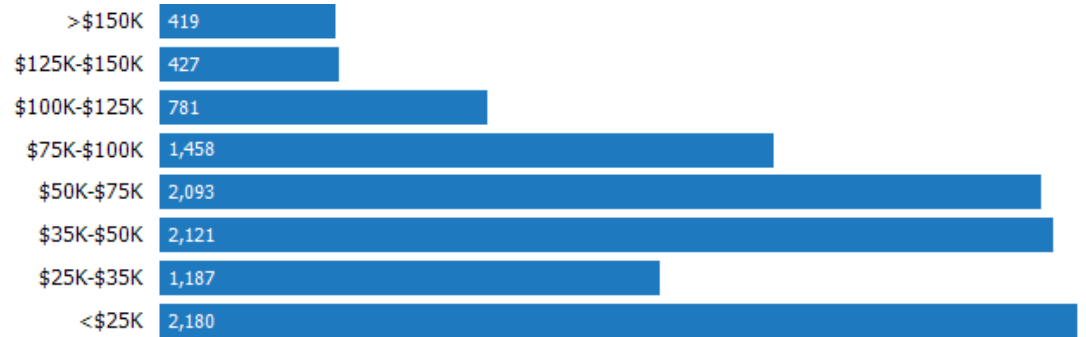
### Household Income Brackets

This chart shows annual household income levels within an area.

Data Source: U.S. Census

Update Frequency: Annually

Riverside



### Presidential Voting Pattern

This chart shows how residents of a county voted in the 2020 presidential election.

Data Source: USElectionAtlas.org

Update Frequency: Quadrennially



# Neighborhood: Economic Stats and Charts

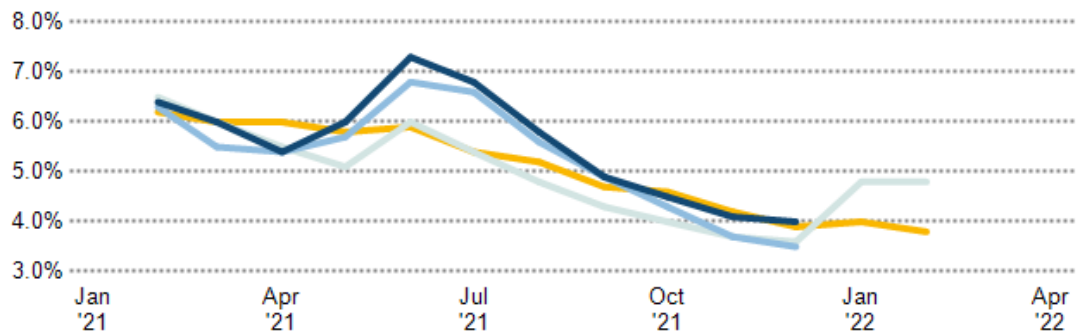
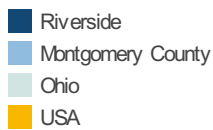
	Riverside	Montgomery County	Ohio	USA
Income Per Capita	\$25,764	\$30,034	\$31,552	\$34,103
Median Household Income	\$48,626	\$51,542	\$56,602	\$62,843
Unemployment Rate	4%	3.5%	4.8%	3.8%
Unemployment Number	429	8.59K	274K	–
Employment Number	–	–	5.48M	–
Labor Force Number	–	–	5.76M	–

## Unemployment Rate

This chart shows the unemployment trend in the area of your search. The unemployment rate is an important driver behind the housing market.

Data Source: Bureau of Labor Statistics

Update Frequency: Monthly

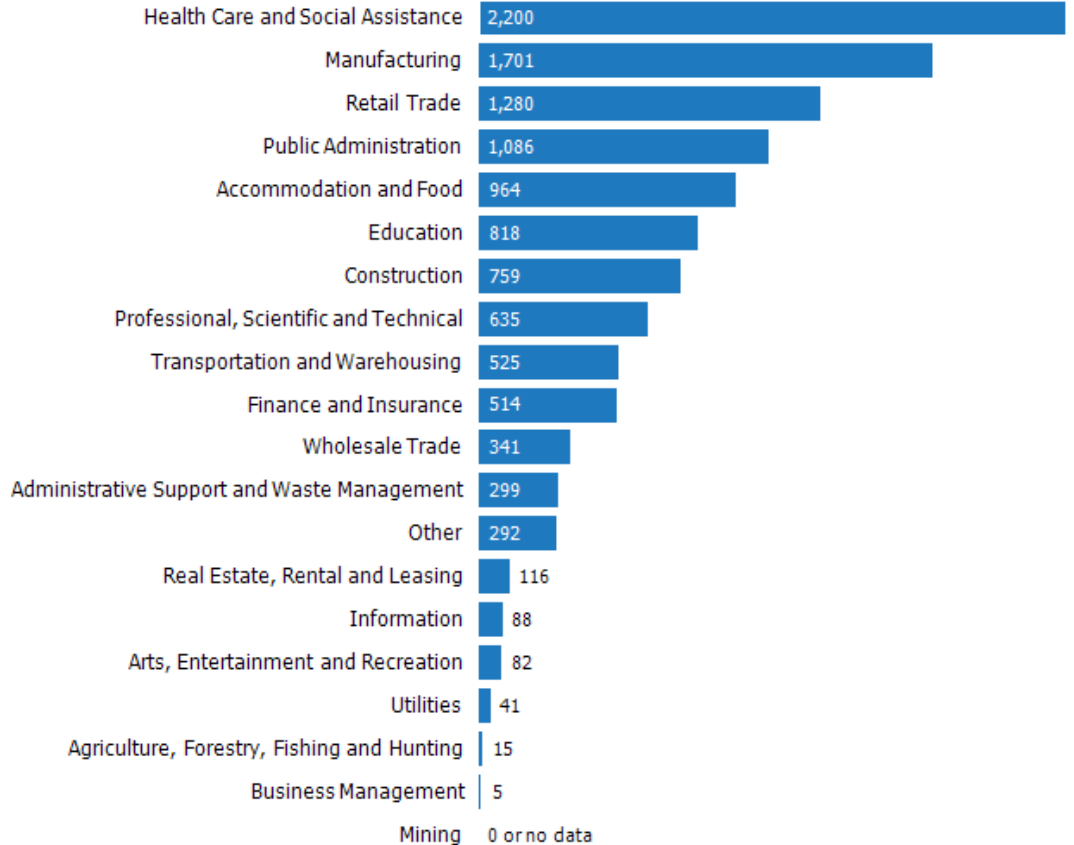


## Occupational Categories

This chart shows categories of employment within an area.

Data Source: U.S. Census

Update Frequency: Annually



# Neighborhood: Quality of Life Stats and Charts

Quality of Life in –

	Riverside	Montgomery County	Ohio	USA
Elevation (in feet)	–	466	–	–
Annual Rainfall (in inches)	35.01	35.01	37.37	–
Annual Snowfall (in inches)	24.82	22.45	29	–
Days of Full Sun (per year)	67	67	68	–
Travel Time to Work (in minutes)	19	22	24	27
Water Quality - Health Violations	–	0	–	–
Water Quality - Monitoring and Report Violations	–	1.89	–	–
Superfund Sites	1	7	54	2,417
Brownfield Sites	Yes	Yes	Yes	Yes

## Average Commute Time

This chart shows average commute times to work, in minutes, by percentage of an area's population.

Data Source: U.S. Census

Update Frequency: Annually



Riverside

## How People Get to Work

This chart shows the types of transportation that residents of the area you searched use for their commute.

Data Source: U.S. Census

Update Frequency: Annually



## Average Monthly Temperature

This chart shows average temperatures in the area you searched.

Data Source: NOAA

Update Frequency: Annually



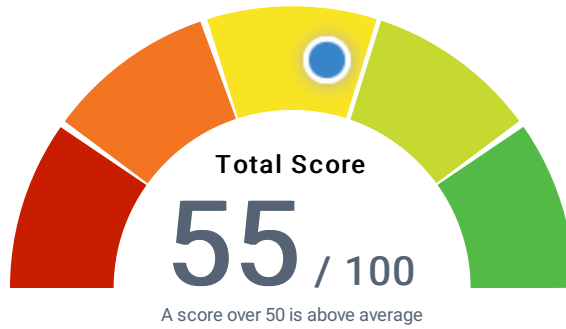


AARP Livability™ Index for 45424

This chart rates the overall livability of a selected ZIP code on a scale from 0 to 100. AARP Livability™ is a trademark of AARP Inc.

Data Source: [AARP](#)

Update Frequency: Annual



<b>Housing</b>	<b>50</b>
Affordability & Access	
<b>Neighborhood</b>	<b>50</b>
Access to Life, Work & Play	
<b>Transportation</b>	<b>54</b>
Safe & Convenient Options	
<b>Environment</b>	<b>66</b>
Clean Air & Water	
<b>Health</b>	<b>51</b>
Prevention, Access & Quality	
<b>Engagement</b>	<b>63</b>
Civic & Social Involvement	
<b>Opportunity</b>	<b>52</b>
Inclusion & Possibilities	

## About RPR (Realtors Property Resource)

- Realtors Property Resource® is a wholly owned subsidiary of the National Association REALTORS®.
- RPR offers comprehensive data – including a nationwide database of 164 million properties – as well as powerful analytics and dynamic reports exclusively for members of the NAR.
- RPR's focus is giving residential and commercial real estate practitioners, brokers, and MLS and Association staff the tools they need to serve their clients.
- This report has been provided to you by a member of the NAR.



## About RPR's Data

RPR generates and compiles real estate and other data from a vast array of sources. The data contained in your report includes some or all of the following:

- **Listing data** from our partner MLSs and CIEs, and related calculations, like estimated value for a property or median sales price for a local market.
- **Public records data** including tax, assessment, and deed information. Foreclosure and distressed data from public records.
- **Market conditions and forecasts** based on listing and public records data.
- **Census and employment data** from the U.S. Census and the U.S. Bureau of Labor Statistics.
- **Demographics and trends data** from Esri. The data in commercial and economic reports includes Tapestry Segmentation, which classifies U.S. residential neighborhoods into unique market segments based on socioeconomic and demographic characteristics.
- **Business data** including consumer expenditures, commercial market potential, retail marketplace, SIC and NAICS business information, and banking potential data from Esri.
- **School data and reviews** from Niche.
- **Specialty data sets** such as walkability scores, traffic counts and flood zones.



## Update Frequency

- Listings and public records data are updated on a continuous basis.
- Charts and statistics calculated from listing and public records data are refreshed monthly.
- Other data sets range from daily to annual updates.

## Learn more

For more information about RPR, please visit RPR's public website: <https://blog.narrpr.com>

