

NEIGHBORHOOD REPORT

Clifton, Ohio



Presented by

Kyle Sasser | REALTOR®

Ohio Real Estate License: SAL.2022004245



Mobile: (937) 907-6777

Main: Kyle@AshlarRE.com

Agent: <https://AshlarRE.com/>

Keller Williams Advisors Realty

5250 Far Hills Ste 100

Suite 100

Dayton, OH 45429

Neighborhood: Housing Stats and Charts

	Clifton	Greene County	Ohio	USA
Median Estimated Home Value	–	\$267K	\$236K	\$342K
Estimated Home Value 12-Month Change	–	+11.6%	+11.2%	+11.6%
Median List Price	–	\$325K	\$225K	–
List Price 1-Month Change	–	-4.2%	+7.1%	–
List Price 12-Month Change	–	+49.8%	+60.8%	–
Median Home Age	108	50	56	43
Own	79%	66%	66%	64%
Rent	21%	34%	34%	36%
\$ Value of All Buildings for which Permits Were Issued	–	\$199M	\$6.42B	\$307B
% Change in Permits for All Buildings	–	-6%	+15%	+13%
% Change in \$ Value for All Buildings	–	-11%	+18%	+10%

Error downloading chart at url: <https://www.narrpr.com/handlers/chart-report.ashx?contentType=application%2fjson&reportId=28336201&reportType=5&type=19&height=40&name=NumberOfBedroomsInRecentSales> - Error message:

Insufficient Chart Data

```
{
  "html": ""
}
```

Error downloading chart at url: <https://www.narrpr.com/handlers/chart-report.ashx?contentType=application%2fjson&reportId=28336201&reportType=5&type=18&height=100&name=ChartCountByAgeOfHomeForPlace&showLegend=True> - Error message:

Insufficient Chart Data

```
{
  "html": ""
}
```

Neighborhood: People Stats and Charts

	Clifton	Greene County	Ohio	USA
Population	116	167K	11.7M	325M
Population Density per Sq Mi	688	403	285	—
Population Change since 2010	+8.6%	+6.8%	+2.6%	+8.2%
Median Age	40	38	39	38
Male / Female Ratio	47%	49%	49%	49%

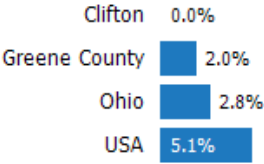
Education Levels of Population

This chart shows the educational achievement levels of adults in an area, compared with other geographies.

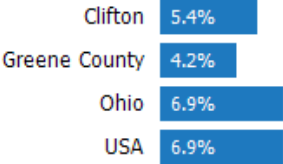
Data Source: U.S. Census American Community Survey via Esri, 2021

Update Frequency: Annually

Less Than 9th Grade



9-12th Grade/No Diploma



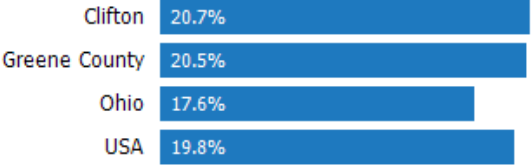
High School Graduate



Associate Degree



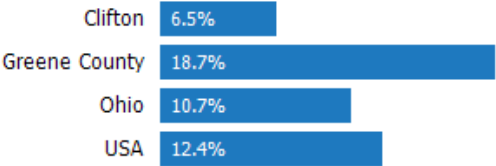
Bachelor's Degree



At Least a College Education



Grad/Professional Degree



Population of Children by Age Group

This chart shows the distribution of the population of children by age range — from birth to 17 — in the area of your search.

Data Source: U.S. Census

Update Frequency: Annually

Clifton



Population of Adults by Age Group

This chart shows the distribution of the population of adults by age range — from 18 to 75-plus — in the area of your search.

Data Source: U.S. Census

Update Frequency: Annually

Clifton



Households With Children

This chart shows the distribution of households with children, categorized by marital status, in the area of your search.

Data Source: U.S. Census

Update Frequency: Annually

Clifton



Household Income Brackets

This chart shows annual household income levels within an area.

Data Source: U.S. Census

Update Frequency: Annually

Clifton



Presidential Voting Pattern

This chart shows how residents of a county voted in the 2020 presidential election.

Data Source: USElectionAtlas.org

Update Frequency: Quadrennially

Greene County



Neighborhood: Economic Stats and Charts

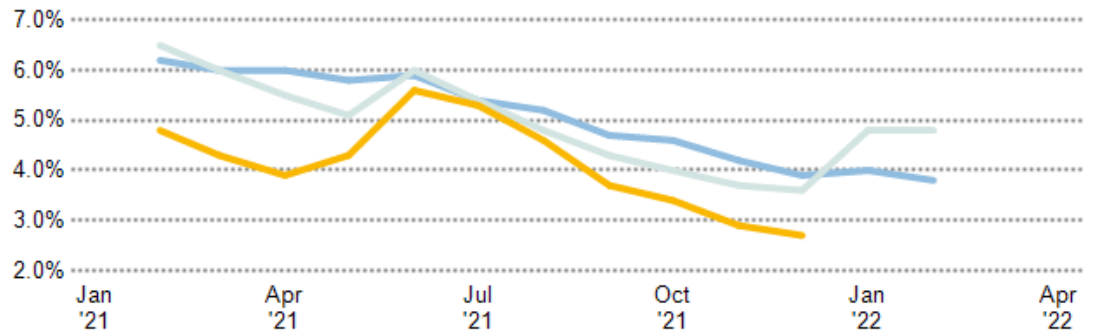
	Clifton	Greene County	Ohio	USA
Income Per Capita	\$40,871	\$35,833	\$31,552	\$34,103
Median Household Income	\$56,250	\$68,720	\$56,602	\$62,843
Unemployment Rate	—	2.7%	4.8%	3.8%
Unemployment Number	—	2.24K	274K	—
Employment Number	—	—	5.48M	—
Labor Force Number	—	82.3K	5.76M	—

Unemployment Rate

This chart shows the unemployment trend in the area of your search. The unemployment rate is an important driver behind the housing market.

Data Source: Bureau of Labor Statistics

Update Frequency: Monthly



Occupational Categories

This chart shows categories of employment within an area.

Data Source: U.S. Census

Update Frequency: Annually



Neighborhood: Quality of Life Stats and Charts

Quality of Life in 45316

	Clifton	Greene County	Ohio	USA
Elevation (in feet)	—	750	—	—
Annual Rainfall (in inches)	35.01	35.79	37.37	—
Annual Snowfall (in inches)	30.05	25.12	29	—
Days of Full Sun (per year)	67	67	68	—
Travel Time to Work (in minutes)	—	21	24	27
Water Quality - Health Violations	—	0	—	—
Water Quality - Monitoring and Report Violations	—	1	—	—
Superfund Sites	0	2	54	2,417
Brownfield Sites	No	Yes	Yes	Yes

Average Commute Time

This chart shows average commute times to work, in minutes, by percentage of an area's population.

Data Source: U.S. Census

Update Frequency: Annually



How People Get to Work

This chart shows the types of transportation that residents of the area you searched use for their commute.

Data Source: U.S. Census

Update Frequency: Annually



Average Monthly Temperature

This chart shows average temperatures in the area you searched.

Data Source: NOAA

Update Frequency: Annually



Error downloading chart at url: <https://www.narrpr.com/handlers/chart-report.ashx?contentType=application%2fjson&reportId=28336201&reportType=5&type=118&enableSeparator=True>

content message: Error message:

Insufficient Chart Data

```
{
  "html": ""
}
```

Error downloading chart at url: <https://www.narrpr.com/handlers/chart-report.ashx?contentType=application%2fjson&reportId=28336201&reportType=5&type=280&width=635&showLegend=True> - Error message:

Insufficient Chart Data

```
{"html":  
"
```


About RPR (Realtors Property Resource)

- Realtors Property Resource® is a wholly owned subsidiary of the National Association REALTORS®.
- RPR offers comprehensive data – including a nationwide database of 164 million properties – as well as powerful analytics and dynamic reports exclusively for members of the NAR.
- RPR's focus is giving residential and commercial real estate practitioners, brokers, and MLS and Association staff the tools they need to serve their clients.
- This report has been provided to you by a member of the NAR.



About RPR's Data

RPR generates and compiles real estate and other data from a vast array of sources. The data contained in your report includes some or all of the following:

- **Listing data** from our partner MLSs and CIEs, and related calculations, like estimated value for a property or median sales price for a local market.
- **Public records data** including tax, assessment, and deed information. Foreclosure and distressed data from public records.
- **Market conditions and forecasts** based on listing and public records data.
- **Census and employment data** from the U.S. Census and the U.S. Bureau of Labor Statistics.
- **Demographics and trends data** from Esri. The data in commercial and economic reports includes Tapestry Segmentation, which classifies U.S. residential neighborhoods into unique market segments based on socioeconomic and demographic characteristics.
- **Business data** including consumer expenditures, commercial market potential, retail marketplace, SIC and NAICS business information, and banking potential data from Esri.
- **School data and reviews** from Niche.
- **Specialty data sets** such as walkability scores, traffic counts and flood zones.



Update Frequency

- Listings and public records data are updated on a continuous basis.
- Charts and statistics calculated from listing and public records data are refreshed monthly.
- Other data sets range from daily to annual updates.

Learn more

For more information about RPR, please visit RPR's public website: <https://blog.narrpr.com>

