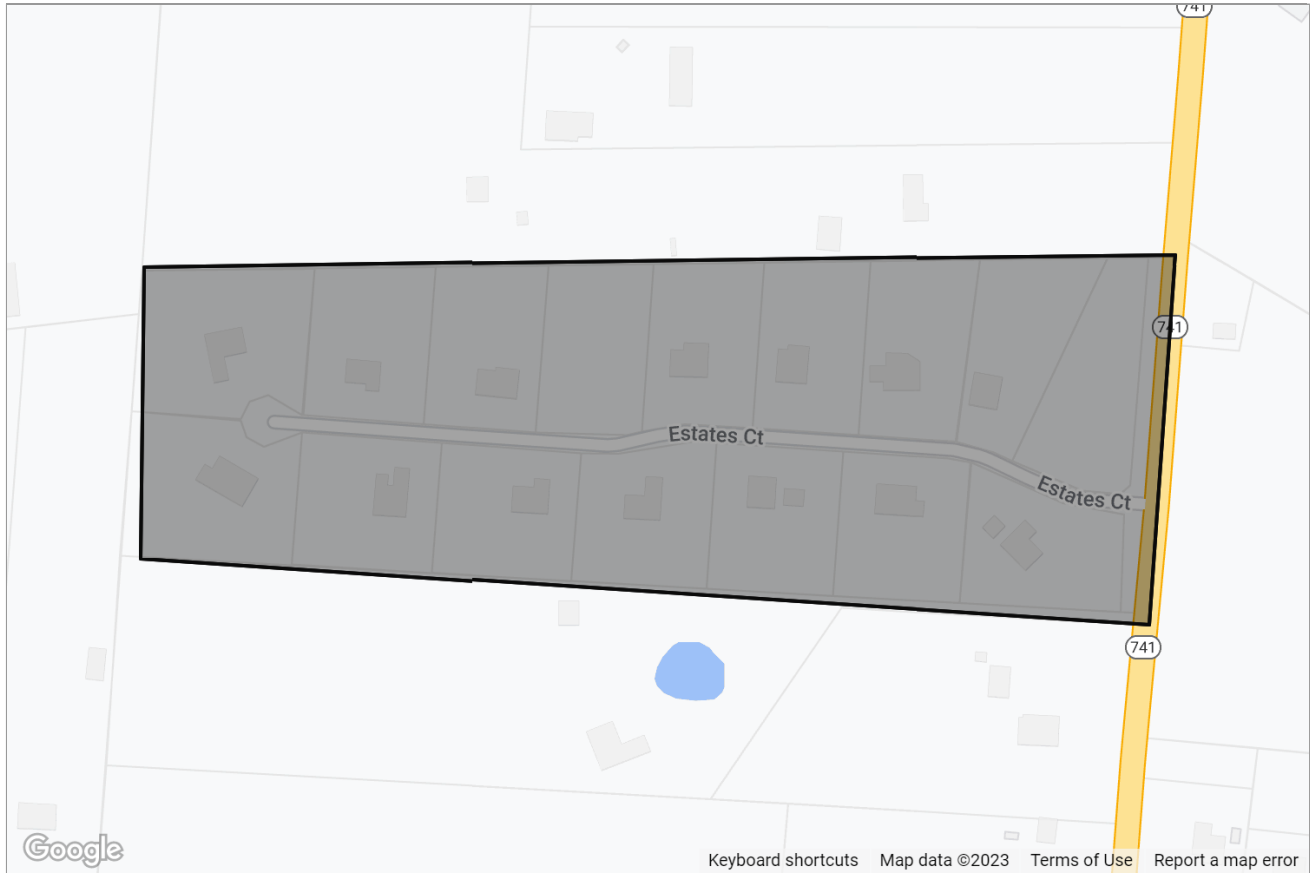


NEIGHBORHOOD REPORT

# Clearcreek Estates in Warren County, OH



Presented by

**Kyle Sasser** | REALTOR®

Ohio Real Estate License: SAL.2022004245



Mobile: (937) 907-6777

Main: [Kyle@AshlarRE.com](mailto:Kyle@AshlarRE.com)

Agent: <https://AshlarRE.com/>

**Keller Williams Advisors Realty**

5250 Far Hills Ste 100

Suite 100

Dayton, OH 45429

# Neighborhood: Housing Stats and Charts

	Clearcreek Estates	Warren County	Ohio	USA
Median Estimated Home Value	\$708K	\$358K	\$236K	\$342K
Estimated Home Value 12-Month Change	+18.5%	+12.9%	+11.2%	+11.6%
Median List Price	–	\$400K	\$225K	–
List Price 1-Month Change	–	-3.6%	+7.1%	–
List Price 12-Month Change	–	+90.6%	+60.8%	–
Median Home Age	12	30	56	43
Own	100%	78%	66%	64%
Rent	0%	22%	34%	36%
\$ Value of All Buildings for which Permits Were Issued	–	\$415M	\$6.42B	\$307B
% Change in Permits for All Buildings	–	+14%	+15%	+13%
% Change in \$ Value for All Buildings	–	+24%	+18%	+10%

Error downloading chart at url: <https://www.narrpr.com/handlers/chart-report.ashx?contentType=application%2fjson&reportId=28324466&reportType=5&type=19&height=40&name=NumberOfBedroomsInRecentSales> - Error message:

Insufficient Chart Data

```
{ "html": ""
}
```

Error downloading chart at url: <https://www.narrpr.com/handlers/chart-report.ashx?contentType=application%2fjson&reportId=28324466&reportType=5&type=18&height=100&name=ChartCountByAgeOfHomeForPlace&showLegend=True> - Error message:

Insufficient Chart Data

```
{ "html": ""
}
```

# Neighborhood: People Stats and Charts

	Clearcreek Estates	Warren County	Ohio	USA
Population	1.3K	229K	11.7M	325M
Population Density per Sq Mi	365	571	285	–
Population Change since 2010	+8.4%	+14.3%	+2.6%	+8.2%
Median Age	52	39	39	38
Male / Female Ratio	46%	50%	49%	49%

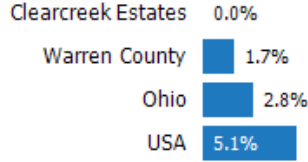
## Education Levels of Population

This chart shows the educational achievement levels of adults in an area, compared with other geographies.

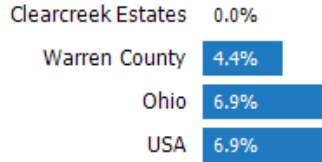
Data Source: U.S. Census American Community Survey via Esri, 2021

Update Frequency: Annually

### Less Than 9th Grade



### 9-12th Grade/No Diploma



### High School Graduate



### Associate Degree



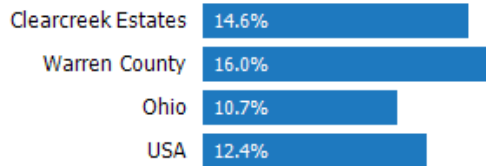
### Bachelor's Degree



### At Least a College Education



### Grad/Professional Degree



## Population of Children by Age Group

This chart shows the distribution of the population of children by age range — from birth to 17 — in the area of your search.

Data Source: U.S. Census

Update Frequency: Annually

Clearcreek Estates



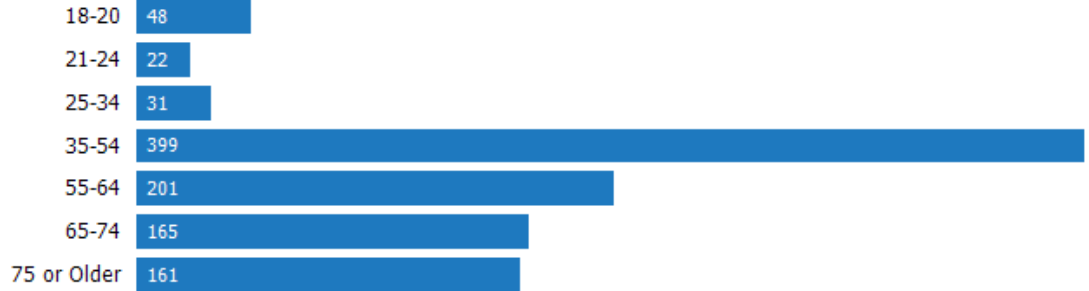
## Population of Adults by Age Group

This chart shows the distribution of the population of adults by age range — from 18 to 75-plus — in the area of your search.

Data Source: U.S. Census

Update Frequency: Annually

Clearcreek Estates



## Households With Children

This chart shows the distribution of households with children, categorized by marital status, in the area of your search.

Data Source: U.S. Census

Update Frequency: Annually

Clearcreek Estates



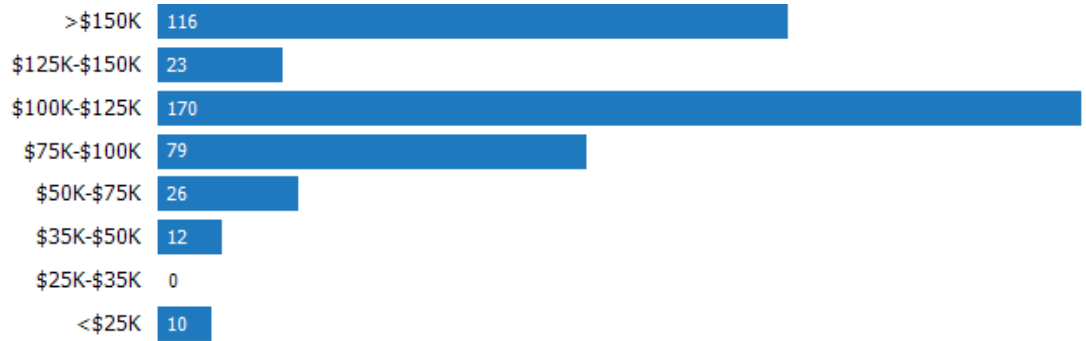
## Household Income Brackets

This chart shows annual household income levels within an area.

Data Source: U.S. Census

Update Frequency: Annually

Clearcreek Estates



## Presidential Voting Pattern

This chart shows how residents of a county voted in the 2020 presidential election.

Data Source: USElectionAtlas.org

Update Frequency: Quadrennially

Warren County



# Neighborhood: Economic Stats and Charts

	Clearcreek Estates	Warren County	Ohio	USA
<b>Income Per Capita</b>	\$41,771	\$41,792	\$31,552	\$34,103
<b>Median Household Income</b>	\$108,511	\$87,125	\$56,602	\$62,843
<b>Unemployment Rate</b>	–	2.6%	4.8%	3.8%
<b>Unemployment Number</b>	–	3.15K	274K	–
<b>Employment Number</b>	–	–	5.48M	–
<b>Labor Force Number</b>	–	120K	5.76M	–

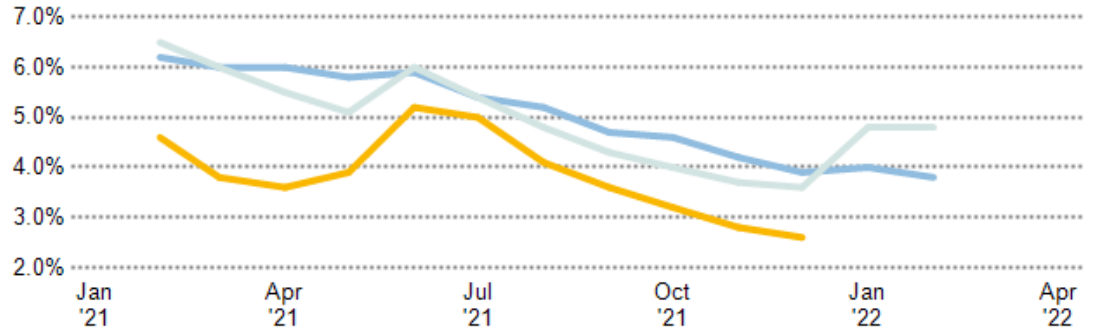
## Unemployment Rate

This chart shows the unemployment trend in the area of your search. The unemployment rate is an important driver behind the housing market.

Data Source: Bureau of Labor Statistics

Update Frequency: Monthly

- Warren County
- Ohio
- USA



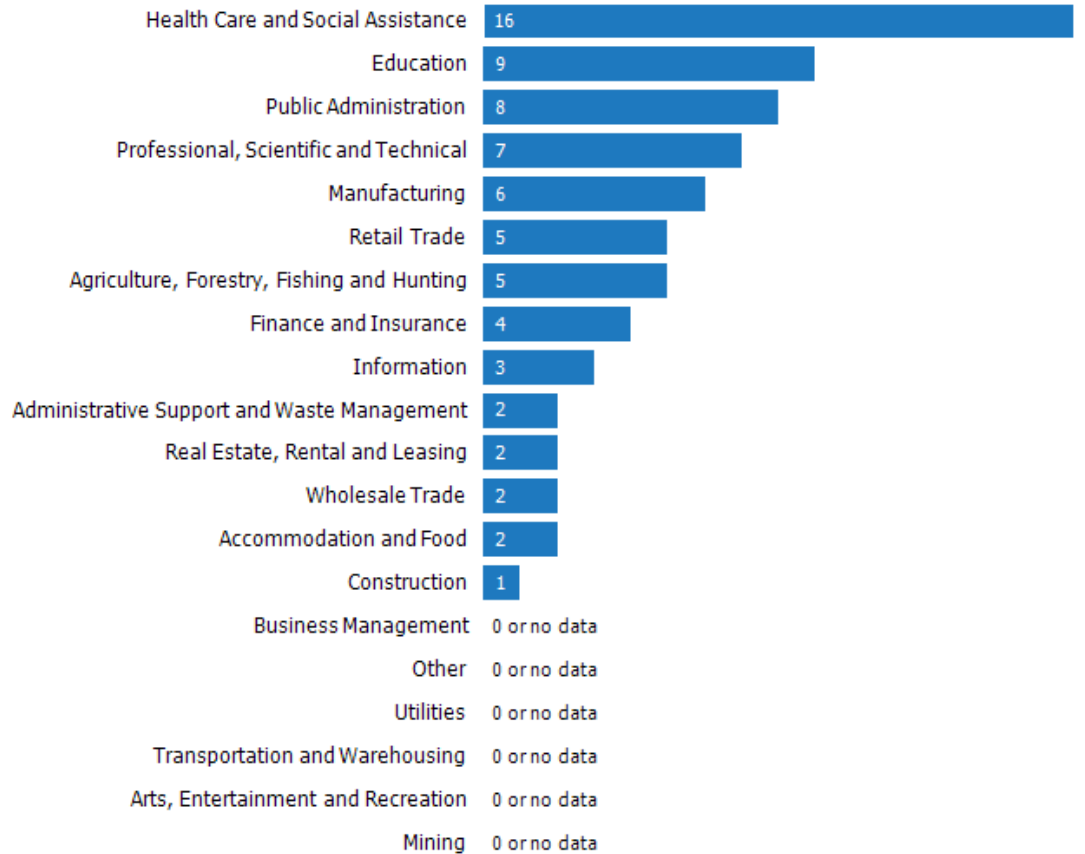
## Occupational Categories

This chart shows categories of employment within an area.

Data Source: U.S. Census

Update Frequency: Annually

- Clearcreek Estates



# Neighborhood: Quality of Life Stats and Charts

Quality of Life in –

	Clearcreek Estates	Warren County	Ohio	USA
Elevation (in feet)	468	513	–	–
Annual Rainfall (in inches)	35.01	42.43	37.37	–
Annual Snowfall (in inches)	18.05	18.05	29	–
Days of Full Sun (per year)	67	68	68	–
Travel Time to Work (in minutes)	24	26	24	27
Water Quality - Health Violations	–	0	–	–
Water Quality - Monitoring and Report Violations	–	2.83	–	–
Superfund Sites	0	1	54	2,417
Brownfield Sites	No	Yes	Yes	Yes

## Average Commute Time

This chart shows average commute times to work, in minutes, by percentage of an area's population.

Data Source: U.S. Census

Update Frequency: Annually



Clearcreek Estates

## How People Get to Work

This chart shows the types of transportation that residents of the area you searched use for their commute.

Data Source: U.S. Census

Update Frequency: Annually



Clearcreek Estates

Error downloading chart at url: <https://www.narrpr.com/handlers/chart-report.ashx?contentType=application%2fjson&reportId=28324466&reportType=5&type=38&enableSeparator=True> - Error message:

Insufficient Chart Data

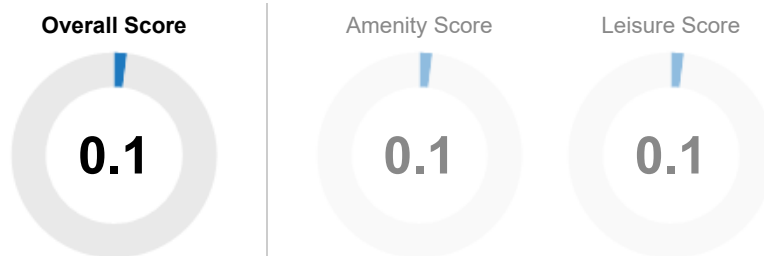
```
{ "html": "" }
```

## Walkability Scores (out of 5)

This neighborhood or ZIP code is rated for walking access to general points of interest, reflected in the overall score, plus amenities (such as retail stores) and leisure (such as restaurants and parks). Other factors considered in the scores are street types, weather, public transportation and population density.

Data Source: Maponics

Update Frequency: Quarterly

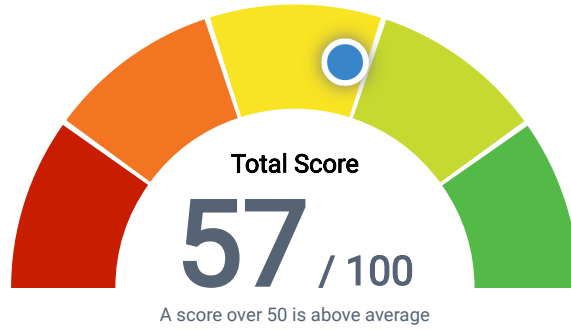


## AARP Livability™ Index for 45066

This chart rates the overall livability of a selected ZIP code on a scale from 0 to 100. AARP Livability™ is a trademark of AARP Inc.

Data Source: [AARP](#)

Update Frequency: Annual



<b>Housing</b>	<b>41</b>
Affordability & Access	
<b>Neighborhood</b>	<b>53</b>
Access to Life, Work & Play	
<b>Transportation</b>	<b>48</b>
Safe & Convenient Options	
<b>Environment</b>	<b>64</b>
Clean Air & Water	
<b>Health</b>	<b>57</b>
Prevention, Access & Quality	
<b>Engagement</b>	<b>62</b>
Civic & Social Involvement	
<b>Opportunity</b>	<b>73</b>
Inclusion & Possibilities	



## About RPR (Realtors Property Resource)

- Realtors Property Resource® is a wholly owned subsidiary of the National Association REALTORS®.
- RPR offers comprehensive data – including a nationwide database of 164 million properties – as well as powerful analytics and dynamic reports exclusively for members of the NAR.
- RPR's focus is giving residential and commercial real estate practitioners, brokers, and MLS and Association staff the tools they need to serve their clients.
- This report has been provided to you by a member of the NAR.



## About RPR's Data

RPR generates and compiles real estate and other data from a vast array of sources. The data contained in your report includes some or all of the following:

- **Listing data** from our partner MLSs and CIEs, and related calculations, like estimated value for a property or median sales price for a local market.
- **Public records data** including tax, assessment, and deed information. Foreclosure and distressed data from public records.
- **Market conditions and forecasts** based on listing and public records data.
- **Census and employment data** from the U.S. Census and the U.S. Bureau of Labor Statistics.
- **Demographics and trends data** from Esri. The data in commercial and economic reports includes Tapestry Segmentation, which classifies U.S. residential neighborhoods into unique market segments based on socioeconomic and demographic characteristics.
- **Business data** including consumer expenditures, commercial market potential, retail marketplace, SIC and NAICS business information, and banking potential data from Esri.
- **School data and reviews** from Niche.
- **Specialty data sets** such as walkability scores, traffic counts and flood zones.



## Update Frequency

- Listings and public records data are updated on a continuous basis.
- Charts and statistics calculated from listing and public records data are refreshed monthly.
- Other data sets range from daily to annual updates.

## Learn more

For more information about RPR, please visit RPR's public website: <https://blog.narrpr.com>

